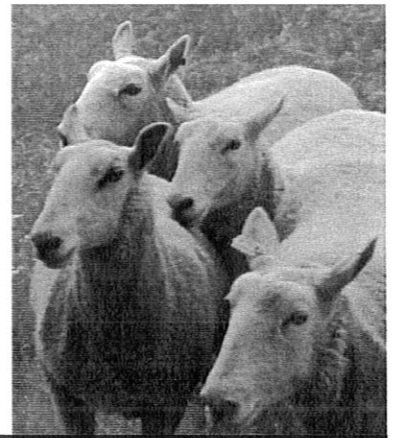




Black Hills Stock Show North American Sheep Dog Trials Monday, January 30, 2012



\$5,000 Purse

Handlers meeting at 12:00 pm (subject to change) in the Civic Center Arena.
Preliminaries start at 1:00 pm and Semi-Finals at 7:30 pm

Paying 13 Monies:

- 1st - 5th in the first go round
- 1st - 3rd in Semi-Finals
 - 1st - 5th in Finals
- Buckle award to 1st place

Entry fees are \$55 per dog. Entries close January 20, 2012. The top 20 dogs will compete for the semi-finals with the top 10 dogs to runoff in the Finals. Any handler may qualify 3 dogs in the semi-finals and 2 dogs in the Finals. Refund of entry fee after January 20th deadline will be allowed with signed Veterinarian Certificate only!

For more information contact the Black Hills Stock Show Office at 605-355-3861 or Duane Hofer at 605-348-4395. Entries limited to 3 dogs per handler. Enter dogs in the order you would like them to run. **Entries accepted on a first come, first serve basis. The committee reserves the right to limit the number of entries.**

Dog	Age	Sex	Owner/Handler	Fee
1. _____				\$55
2. _____				\$55
3. _____				\$55

Name: _____ Phone: _____

Address: _____ SSN #: _____

City: _____ State: _____ Zip: _____

Return to: Black Hills Stock Show Office - 800 San Francisco St - Rapid City, SD 57701

